

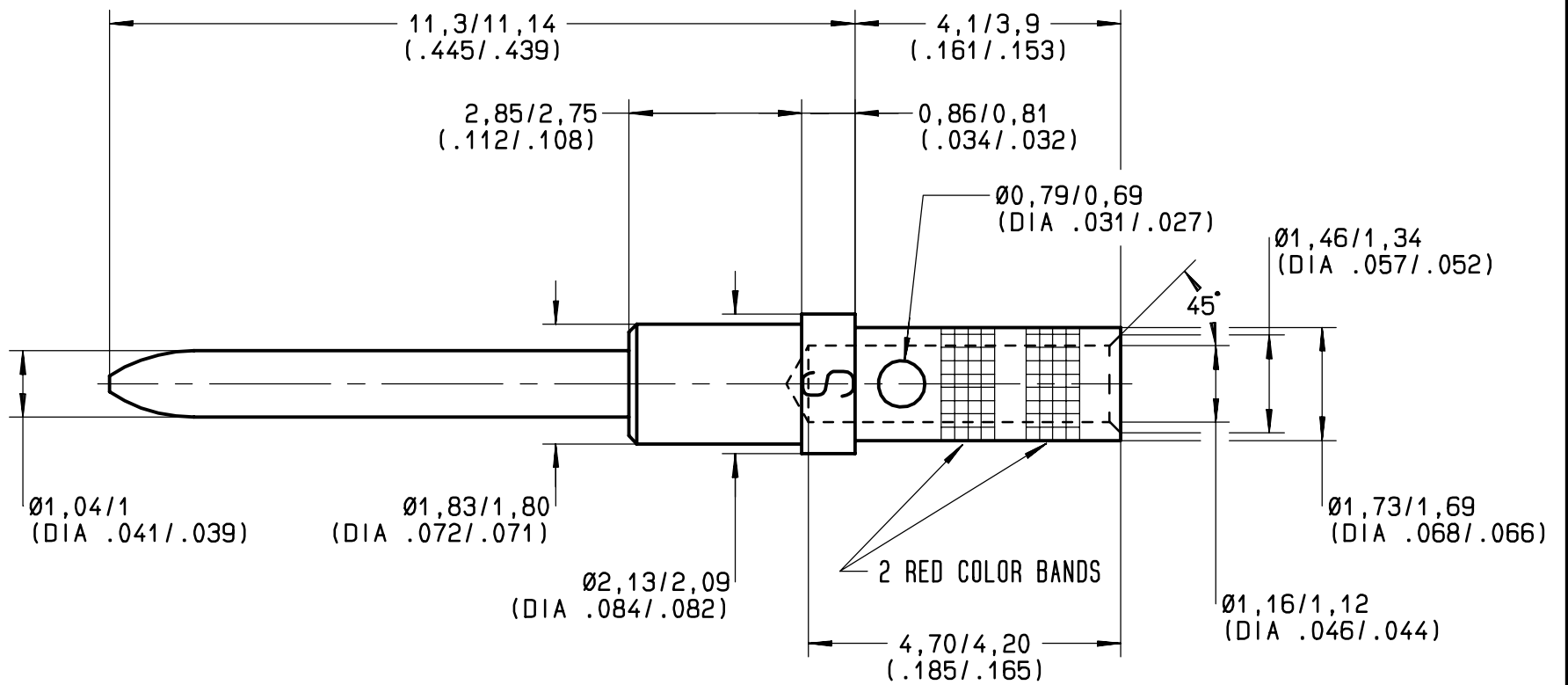


Series  
EPX

SIZE 20 CRIMP PIN CONTACT

Issue:  
08 OCT 98

Page  
1 / 1



MATERIAL: COPPER ALLOY (C97) HARDNESS IN KNOOP 120 MAX (107 HV) FOR CRIMP BARREL  
180 MIN (165 HV) FOR BEYOND SHOULDER

FINISH: GOLD PER MIL-G-45204 TYPE I OR II GRADE C OR D CLASS 1 50 MICROINCHES OVER NICKEL PLATE PER QQ-N-290

WIRES ACCOMODATED: AWG 20-22-24  
INSULATOR DIAMETER: .071 MAX (1,80)  
STRIP LENGTH: .158 (4)

CRIMP CONTACT TENSILE REQUIREMENTS USING MIL SPEC TOOLING AND WIRE SPEC  
MIL-W-81381/12 20 GA. 20 LBS (9 daN)  
MIL-W-22759/41 20 GA. 20 LBS (9 daN)  
M22520/2-01 20 GA. 20 LBS (9 daN)  
CRIMPED CONTACTS WILL SHOW NO CRACK WHEN INSPECTED PER MIL-C-22520 AT 10X

RADIAL TOOLING RECOMMENDATION  
CRIMPING TOOL: M22520/2-01 (RADIAL 282 281)  
SELECTOR POSITION: 7 FOR AWG 20  
6 FOR AWG 22  
5 FOR AWG 24  
POSITIONER: M22520/2-08 (RADIAL 282 971)

INSERTION/EXTRACTION TOOL: M81969/1-02 (RADIAL 282 886)  
SPL RADIAL INS. 282 881 / EXT. 282 891

This information is given as an indication. In the continual goal to improve our products, we reserve the right to make any modifications judged necessary.

CREATION				
PEN: M970400041A				
NOM: L.GARCIA				
DATE: 08.10.98				
APPR.:	Issue	Revisions	Name	Approved